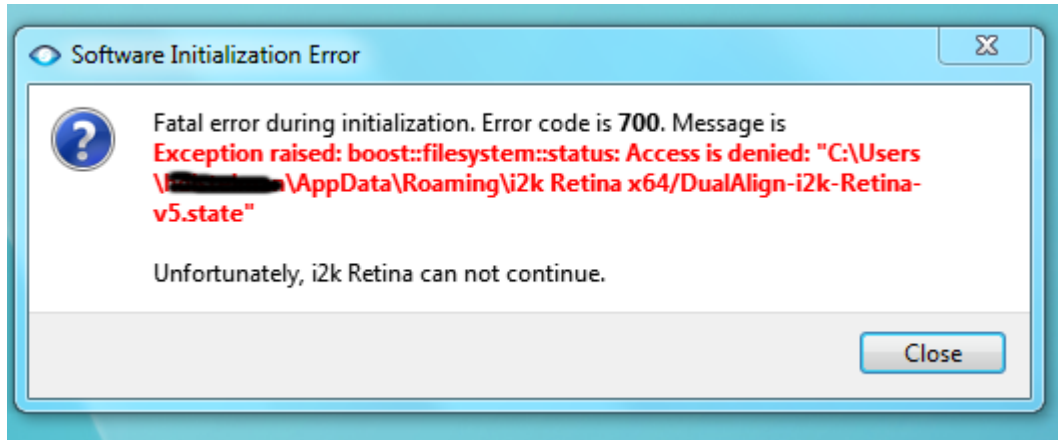


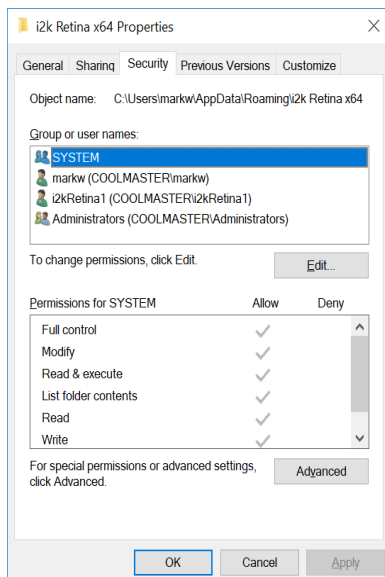


Multi-user Configuration for i2k Retina™ Running on Windows

If when installing or during initial use of i2k Retina™ you encounter an error 700, such as in the image below, then you may want to remove i2k Retina and re-install it using an administrative user account. This is the first step in making i2k Retina accessible to all local users.



Once you have completed the installation by the administrative user, you will also need to allow specific users to access folders in "%APPDATA%\i2k Retina x64". By default, it is only accessible to the administrator. Your IT / Admin user will need to use the screen displayed below to add the correct privileges so the intended user can read and write to that folder.



This approach has been tested by DualAlign on Microsoft Windows 10 operating system. It should work similarly on earlier operating systems.